

PACIFIC LED WT470/471/480/481C/X

Mounting instructions

Instructions de montage

Montageanleitung

Montage instruktic

Istruzioni di montaggio

Instrucciones de montaje

Instruções de montagem

Monteringsinstruktioner

Monteringsvejledning

Kokoonpano- ja kiinnitysohjeet

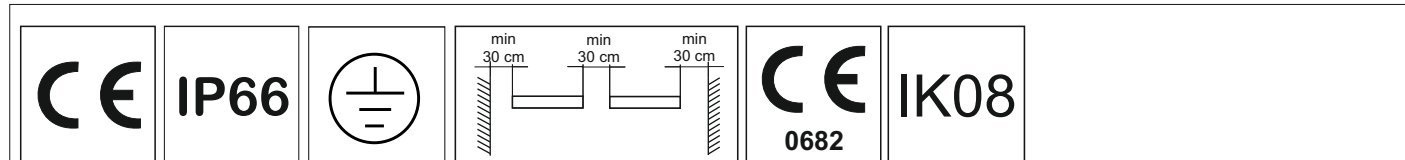
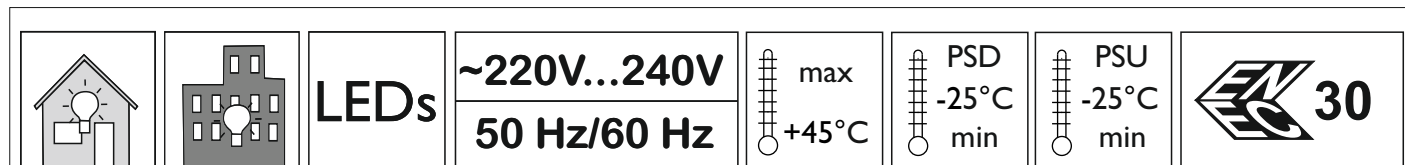
Montaj yönergesi

Szerelési utasítások

Instrukcja montażu

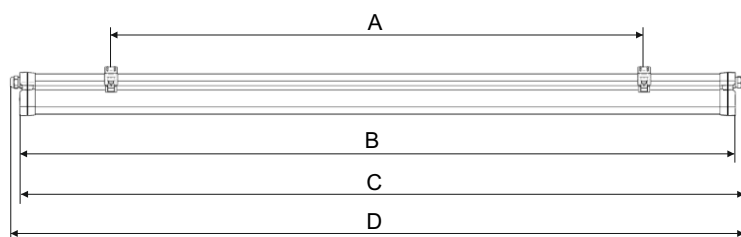
Návod k montáži

Návod k montáži



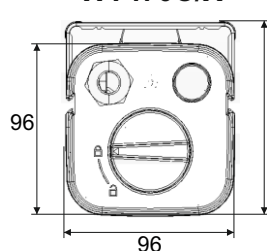
Luminaire type	Driver	PSU/PSD	Max No of luminaires on MCB (16A type-B)*	Inrush current Peak [A/μS]
LED23S LED42S	35W	PSD	24	21/280
		PSU	33	15.1/230
LED35S LED64S LED80S	60W	PSD	24	21/280
		PSU	24	17.8/282
LED64S LED80S	100W	PSD	18	4.5/1000

* Depends on the parasitic capacity and inductance of the power mains network

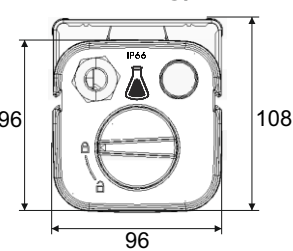


Luminaire type	A [mm]	B [mm]	C [mm]	D [mm]	kg max
L700	450	700	721		1,8
LI300	900	1300	1321		2,7
LI600	1200	1600	1621		3,2
TW1/TW3 LI300	900	1300	1321	1342	2,9
TW1/TW3 LI600	1200	1600	1621	1642	3,4

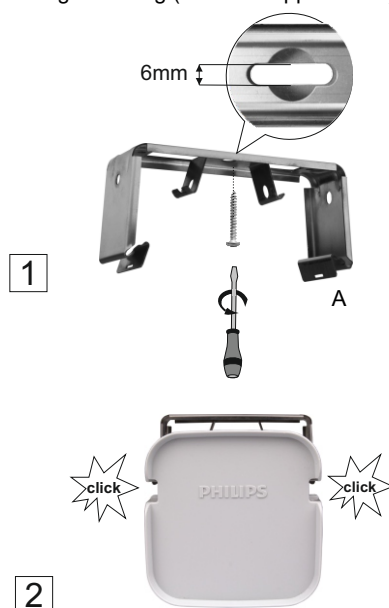
WT470C/X



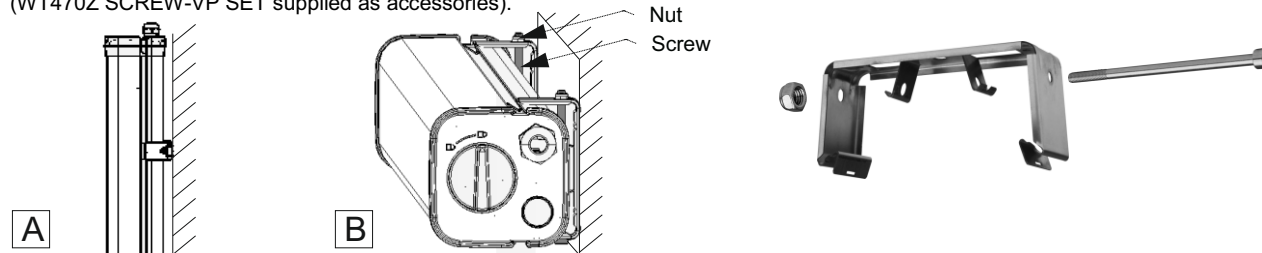
WT471C/X



Ceiling mounting (standard applications)



For wall mounting applications in vertical and/or horizontal positions its required to use special set of screws and nuts (WT470Z SCREW-VP SET supplied as accessories).



The light source contained in this luminaire shall only be replaced by the manufacturer or his service or a similar qualified person. Driver insulation: Basic according to IEC 61347-1.

